

2023

Tawi Consult

COMPANY PROFILE

Tawi House,
1 Hashim Street/Viwandani Road,
Opposite Oxford University Press,
Mikocheni B, 14112, **Dar es Salaam**, Tanzania

tawi



Tawi Offices,
7 Mataka Street-Off Parliament Road,
Opposite Sun Tours and Travels,
Airport Area, Kiembe Samaki, **Zanzibar**

1) Our Story

Tawi Consult is a Tanzanian registered company succeeding its pioneer company DataPlus Consulting Ltd, EST in 2008. Tawi Consult (as a social enterprise company) aims at becoming a dependable development partner with government departments, organizations and companies through provision of reliable consultancy and services that target to maximize improvements in financial, socioeconomic, and environmental well-being.

2) Our Vision, Mission and Values

- **Mission Statement**

(Why do we exist? What is our core purpose?):

Our mission is to support our clients through provision of quality consulting services built around functional partnership and innovative solutions. This is the reason why we come to work each day.

- **Values Statement**

(How do we behave?):

At Tawi Consult, our values are the core of everything we do. These values are:

- Complete client satisfaction: We are not finished until the client is completely satisfied.
- Creativity and innovation: We find the most innovative solutions to our client's problems we're engaged in.
- Playing your position - with passion. We don't just do our job, each one of us gets better at it.
- Teamwork: We work as a team, each player contributing to providing solutions to our clients

- Vision Statement

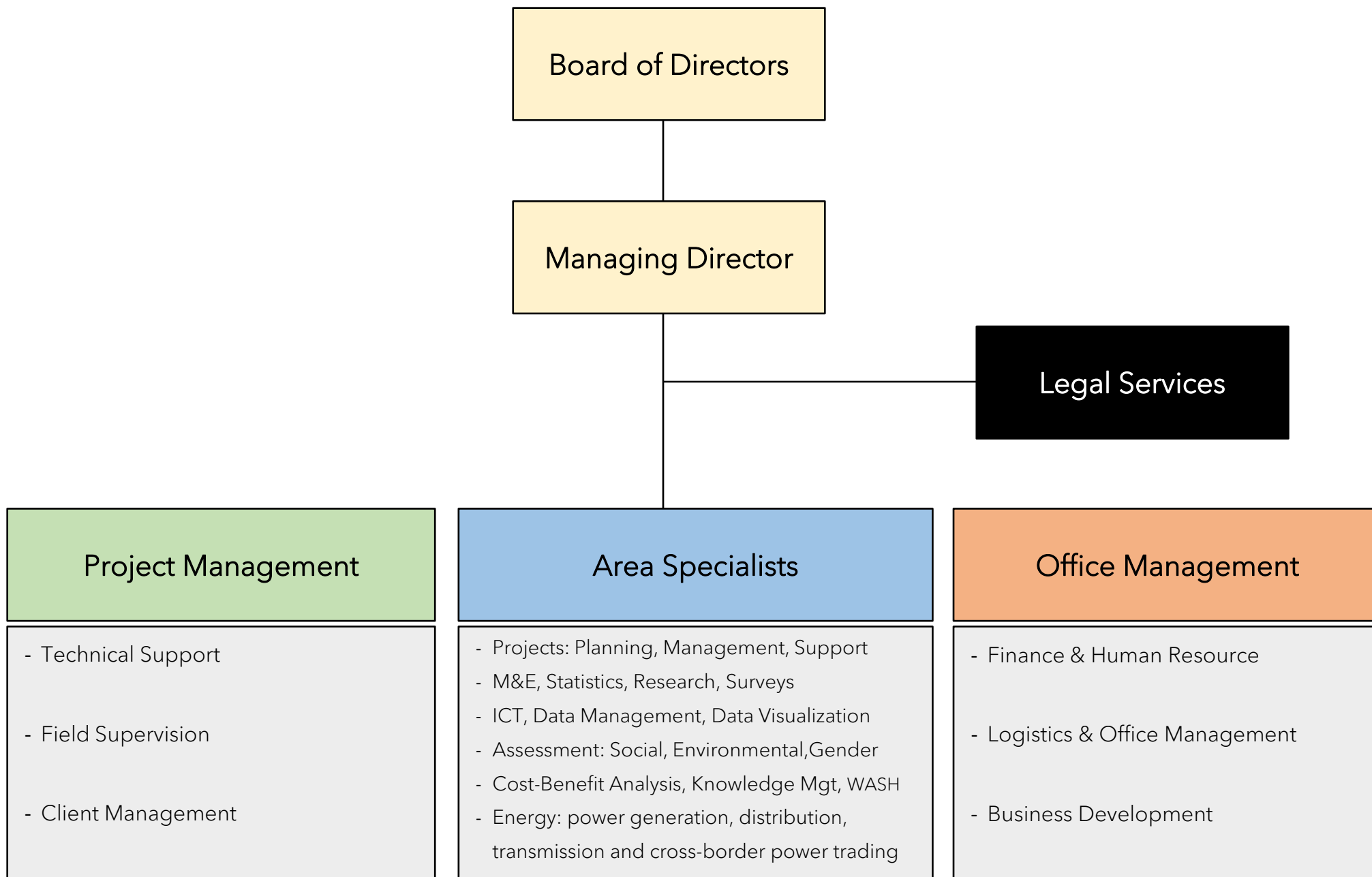
(Where are we going?):

By 2035, we envision Tawi Consult to become a dependable partner with government departments, organizations (local and international), and companies. For our vision to be possible and achievable:

- To our team, being the most knowledgeable team of experts about Project Management and M&E in Tanzania.
- To our community, maximizing their improvements in social-economic, health, and environmental well-being.
- To stakeholders, increasing their service provision and/or satisfying the needs of their clients.

3) Our Company Structure and Management

Tawi Consult maintains a strategic management structure envisioned to ensuring successful consultancy services to its clients. To meet the demand of consultancies, the company regularly hires temporary additional experienced professionals with related expertise in the fields of engagement. The overall organization structure of the company is based on the board of directors which guides the overall functioning and acts as its oversight in company operations, the Managing Director who is the Chief Executive Officer of the company, Finance and Human Resource department, as well as Operations and Business Development departments – please see figure below.



4) What we Do

1. Programme Design & Management

We pride ourselves in helping our clients (local, national, or international bilateral/multilateral organizations) to effectively design and implement/manage both short-term and long-term programmes and projects. To achieve this, we apply all applicable and relevant knowledge, skills, tools, and techniques to project activities to meet the project requirements. Our approach to project design and management include the following areas of skills and capabilities.

Capabilities

- Project formulation, design and proposal development
- Project budgeting and billing
- Project organization and coordination
- Project design and implementation strategy workshops
- Project-based knowledge management
- Design and management of pilot projects
- Project scale up and replication strategies



2. Research, Surveys, Data Collection, and Data Management

At Tawi Consult, we always apply rigorous research methods to collect the right data, process it, and analyze using different scientific approaches to conclude/infer results. We use state-of-the-art research design, analysis, and reporting methodologies to identify the impact of a project, program, or policy as well as generate new knowledge or understanding. Developing and administering small- and large-scale research and surveys for government departments, private firms, and nonprofit organizations to inform on progress/profitability/performance, we use innovative analytic tools and techniques together with rigorous statistical and social science methodologies to support evidence-based decision-making; solve important research questions; and build capacity to improve interventions, processes, and outcomes.

Capabilities

- Research methodology and process design
- Development of research instruments and guidelines
- Socio-economic and geographic profiling
- Sample surveys; market surveys; large surveys; and censuses
- Quantitative and Qualitative studies
- Statistical analysis and report writing
- Policy research and analysis
- Programming questionnaires in Smart Phones and Tablet PCs and database design (Web-based and Stationary)
- Data entry and validation, data management, data cleaning, data classification and standardization; storage and archiving



3. Monitoring and Evaluation

Our company believes in, and therefore supports linking evidence to decision. Informed decisions increase the ability to respond to priority needs that are likely to create lasting changes. The body of evidence is created by implementing an effective and efficient M&E system through which it becomes possible to assess if implementation of a policy, program, or project was rightly executed, whether progress and success could be claimed, and how future efforts might be improved.

Capabilities

- Review, analysis and guidelines for aid effectiveness and results-based management
- Logical Framework Approach & M&E framework and M&E systems development
- Baseline, Midterm, and Endline evaluations
- Process monitoring & Impact evaluations
- Progress, performance, input, output and outcome monitoring and reporting
- Development, results and performance indicators
- Return on Investment, Social Return on Investment, Cost-Benefit and Cost-Effectiveness Analysis
- Participatory and rapid appraisals

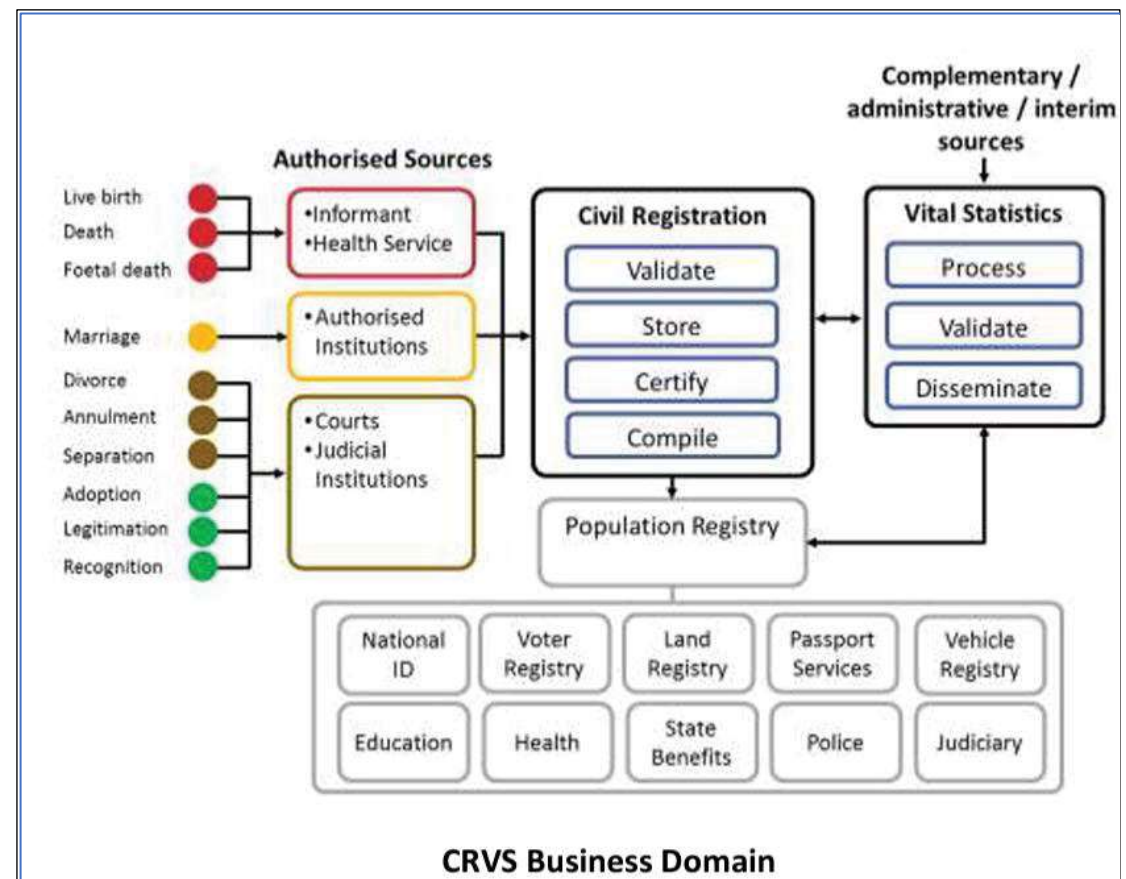


4. Civil Registration and Vital Statistics

An inclusive civil registration and vital statistics (CRVS) system ensures that everyone counts and is counted. Registration of births, deaths (and causes of death), marriages, divorces, and adoption contribute to protection of human rights, empowering individuals, and in promoting sustainable development. Civil registration and civil status certificates give people proof of their legal identity, age, and social relationships. Tawi Consult professionals have been working on various CRVS projects over the years and in various countries.

Capabilities

- Conducting CRVS assessments using globally recognized concepts and methodologies with “as is” and “desired” business process maps to cater for the improve CRVS system functions
- Providing concrete suggestions on how policies, structures and programs around CRVS can be improved, replicated and/or scaled up for the availability of a fully operational CRVS system
- Assisting relevant CRVS staff in compiling, classifying, analyzing, and disseminating reliable data and info
- Identifying statistical and analytical gaps required at the national level to hold the necessary training courses for cadres in order to improve data and work to fill the gaps.
- Providing CRVS-related training and capacity building



5. Energy & Natural Resources

Tawi Consult is venturing into providing technical and professional services to the energy sector in Tanzania by supporting regulators, producers, generators, and users. Our energy and natural resources specialists provide consultancy and related services across the Oil and Gas, Utilities, and Renewables to deliver operational excellence.

What we offer:

- **Energy Generation, Transmission, & Distribution Services** (provision of environmental-friendly services to electricity generation, transmission, and distribution industries; stakeholder engagement and consultation with statutory and non-statutory stakeholders; and design, contract management & implementation of overhead lines) including cross-border power trading.
- **Hydro Power** (provision of advice and support for delivering successful hydro power schemes including: due diligence and economic appraisal of projects)
- **Oil and Gas** (provision of inspection service, non-destructive testing, certification, visual inspection and other technical assistance to ensure the quality, safety and reliability to our client facilities and sites. Our highly qualified and experienced personnel provide solutions to meet all needs from most standards to the most advanced with the ability to respond rapidly and flexibly to safety as well as approved by all the key industries bodies).



Non destructive test



Visual inspection



Sling inspection



Thickness test



Magnetic Particle Inspection [MPI]

5) Our Contacts

Tawi Consult is headquartered in Dar es Salaam, Tanzania to facilitate contact and communication with most of our client base. Our offices are located at the intersection of the Hashim Street and Industrial Way (Viwandani Road) in Mikocheni B area of Kinondoni Municipality. Tawi Consult is also *locally registered with a fully-fledged office in Zanzibar* near the Airport in Kiembe Samaki Area (Opposite Sun Tours & Travel Offices) to cater for Unguja and Pemba Islands.

In the near future, Tawi Consult envisages gradual expansion of its operations in the country by setting up coordination centers in each of the administrative zones. These are/will be: Mbeya City for the South-Western Highlands Zone (*fully operational*); Iringa Municipality for the Southern Highlands Zone; Arusha City for the Northern Zone; Dodoma City for the Central Zone (*partly operational, Offices in Kisasa Area*); Mwanza City for the Lake Zone; Tabora Municipality for the Western Zone; and Mtwara Municipality for the Southern Zone). The planned expansions will enable Tawi Consult to serve more clients and with more efficiency while maintaining local presence.

For more info, please visit our website: www.tawi.co.tz or email us at info@tawi.co.tz. You can also call us at: +255 782 127575 or visit our offices at: Tawi House, 1 Hashimu Street/Viwandani Road, Mikocheni B (14112), Kinondoni, PO. Box 7159, Dar es Salaam, Tanzania, or visit our Zanzibar offices at: Tawi House, 7 Mataka Street, Opposite Sun Tours and Travel, Airport Area - Kiembe Samaki, Magharibi B, Zanzibar.

6) Some of Our Projects – Please see Project Data Sheets

(Executed by the company or its Associate Consultants)